



ARCHIVED - Archiving Content

Archived Content

Information identified as archived is provided for reference, research or recordkeeping purposes. It is not subject to the Government of Canada Web Standards and has not been altered or updated since it was archived. Please contact us to request a format other than those available.

ARCHIVÉE - Contenu archivé

Contenu archivé

L'information dont il est indiqué qu'elle est archivée est fournie à des fins de référence, de recherche ou de tenue de documents. Elle n'est pas assujettie aux normes Web du gouvernement du Canada et elle n'a pas été modifiée ou mise à jour depuis son archivage. Pour obtenir cette information dans un autre format, veuillez communiquer avec nous.

This document is archival in nature and is intended for those who wish to consult archival documents made available from the collection of Public Safety Canada.

Some of these documents are available in only one official language. Translation, to be provided by Public Safety Canada, is available upon request.

Le présent document a une valeur archivistique et fait partie des documents d'archives rendus disponibles par Sécurité publique Canada à ceux qui souhaitent consulter ces documents issus de sa collection.

Certains de ces documents ne sont disponibles que dans une langue officielle. Sécurité publique Canada fournira une traduction sur demande.



KEY PERFORMANCE INDICATORS - Q4 2010

PROPERTY CRIME	Q4 2010	Q4 2009	% Change
DISTRICT 1	2,215	2,644	-16.2%
DISTRICT 2	1,775	1,774	0.1%
DISTRICT 3	2,009	2,018	-0.4%
DISTRICT 4	2,419	2,349	3.0%
CITY-WIDE*	8,422	8,785	-4.1%



-4.1%

PROPERTY CLEARANCE TYPE	Q4 2010	Q4 2009	% Change
UNFOUNDED	2.0%	2.1%	-3.7%
FOUNDED NOT CLEARED	82.1%	81.9%	0.2%
CHARGED	10.2%	10.6%	-4.0%
CLEARED BY OTHER MEANS	5.7%	5.4%	5.6%

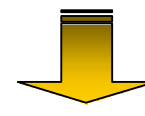
VIOLENT CRIME	Q4 2010	Q4 2009	% Change
DISTRICT 1	419	497	-15.7%
DISTRICT 2	709	659	7.6%
DISTRICT 3	359	395	-9.1%
DISTRICT 4	236	253	-6.7%
CITY-WIDE*	1,726	1,804	-4.3%



-4.3%

VIOLENT CLEARANCE TYPE	Q4 2010	Q4 2009	% Change
UNFOUNDED	6.7%	7.2%	-6.0%
FOUNDED NOT CLEARED	46.9%	46.9%	0.1%
CHARGED	35.1%	35.5%	-1.2%
CLEARED BY OTHER MEANS	11.3%	10.5%	7.8%

RESPONSE TIMES	Q4 2010	Q4 2009	% Change
DISTRICT 1	07:31	08:01	-6.1%
DISTRICT 2	09:03	10:36	-14.7%
DISTRICT 3	10:58	11:32	-4.9%
DISTRICT 4	11:43	12:00	-2.3%
CITY-WIDE*	09:39	10:34	-8.6%



-8.6%

TRAFFIC INJURIES	Q4 2010	Q4 2009	% Change
DISTRICT 1	54	68	-20.6%
DISTRICT 2	70	85	-17.6%
DISTRICT 3	108	110	-1.8%
DISTRICT 4	90	87	3.4%
CITY-WIDE*	322	350	-8.0%



-8.0%

TRAFFIC DEATHS	Q4 2010	Q4 2009	% Change
CITY-WIDE*	2	4	-50.0%



-50.0%

* City-wide totals include incidents coded as location unknown



KEY PERFORMANCE INDICATORS

Q4 2010

Planning, Research & Audit Section

January 2011



TABLE OF CONTENTS

Executive Summary 3

Introduction 4

Property Crime & Clearance Rates..... 5

Violent Crime & Clearance Rates 8

Response Times 11

Traffic Related Injuries & Deaths 13

Appendix 15



LIST OF TABLES

Table 1: City-wide & District Annual Property Crime Comparisons5

Table 2: Recent Property Crime Trends5

Table 3: Four Year Trend for Property Crime Rate per 1,000 Population.....6

Table 4: Property Crime Clearance Rates7

Table 5: City-wide & District Annual Violent Crime Comparisons8

Table 6: Recent Violent Crime Trends.....8

Table 7: Four Year Trend for Violent Crime Rate per 1,000 Population9

Table 8: Violent Crime Clearance Rates.....10

Table 9: City-wide & District Annual Response Time Comparisons11

Table 10: Recent Priority 1 Response Times11

Table 11: Traffic Incidents Involving Injured Persons13

Table 12: Fatal Traffic Incidents.....14

LIST OF FIGURES

Figure 1: Annual Property Crime Rate per 1,000 Population.....6

Figure 2: Annual Violent Crime Rate per 1,000 Population9

Figure 3: Priority 1 Response Times.....12

Figure 4: Motor Vehicle Accidents with Injuries13



EXECUTIVE SUMMARY

Property Crime

The fourth quarter in 2010 showed a 4.1% decrease in property crime (8,422 offences) when compared to the same quarter last year (8,785 offences).

Violent Crime

Violent crime decreased from 1,804 offences in the fourth quarter of 2009 to 1,726 offences in the final quarter of 2010, a decrease of 4.3%.

Clearance Rates

Property crime "Cleared by Charge" rates have slightly decreased from 10.6% to 10.2% when compared to last year and showed no change when compared to last quarter.

"Cleared by Charge" violent crime clearance rates decreased slightly from 35.5% to 35.1% when compared to the same quarter last year and decreased from 36.3% when compared to last quarter.

Response Times

Priority 1 response times in the fourth quarter of 2010 (9:39) are faster by 8.6% when compared to the same quarter last year (10:34).

Traffic Related Injuries & Deaths

Reported traffic related injuries decreased from 350 city-wide incidents to 322 incidents when compared to the same quarter last year. This represents an 8.0% decrease in reported injuries.

There were 4 traffic fatalities that occurred in the final quarter of 2009 and 2 fatalities in the final quarter of 2010.

Annual Citizen Satisfaction Levels

Citizen satisfaction survey results are reported annually. The results for 2009 were reported in the Q1 2010 KPI Report.

Budget Variance

Budget variance data for the quarter is presented to the Vancouver Police Board through their Finance Committee.



INTRODUCTION

The Vancouver Police Department's (VPD) 2008-2012 Strategic Plan establishes the VPD's vision of being "Canada's leader in policing – providing safety for all". The Strategic Plan identifies policing priorities that include the following seven operational goals:

- To reduce property crime by 20% by 2012;
- To reduce violent crime by 10% by 2012;
- To suppress violent gang activity;
- To reduce traffic-related injuries and deaths;
- To improve liveability by reducing street disorder;
- To implement best practices for consequence management and emergency preparedness; and,
- To enhance proactive and visible policing.

The establishment of organizational goals is critical, and success can be accurately determined through effective measurement. The VPD and Vancouver Police Board identified Key Performance Indicators (KPIs) that provide a macro-level perspective of organizational performance. A KPI report is produced on a quarterly basis to provide a snapshot of the VPD relative to its primary purpose – public safety.

This KPI Report presents data for the fourth quarter of 2010 (Q4 2010). This quarter is compared to the same quarter the previous year (Q4 2009). A description of the data included in this report and the extraction criteria is available in the appendix. The KPIs that will be presented in this report are:

- Property crime rates
- Violent crime rates
- Clearance rates for criminal investigations
- Traffic related injuries and deaths
- Annual citizen satisfaction survey¹

¹ This KPI will be reported annually at the beginning of each year.



PROPERTY CRIME & CLEARANCE RATES

Table 1 shows the breakdown of property crime by District during the fourth quarter of 2009 and 2010. As shown, property crime has decreased city-wide when comparing this quarter to the same quarter last year.

Table 1: City-wide & District Annual Property Crime Comparisons

	Q4 2010	Annual Comparison	Q4 2009
District 1	2,215	-16.2%	2,644
District 2	1,775	0.1%	1,774
District 3	2,009	-0.4%	2,018
District 4	2,419	3.0%	2,349
City-wide	8,422	-4.1%	8,785

To account for seasonal changes, Table 2 shows the percentage change from this quarter to the same quarter in the previous year as they relate to the number of reported property crimes.

Table 2: Recent Property Crime Trends

Quarter	# of Property Crimes	% Change From Same Quarter Previous Year
Q4 2009	8,785	-10.6%
Q1 2010	8,643	-9.3%
Q2 2010	8,696	-7.3%
Q3 2010	9,280	-6.8%
Q4 2010	8,422	-4.1%



Table 3 shows property crime has decreased annually since the implementation of the 2008 – 2012 Strategic Plan. This decrease is attributed to all areas of property crime with the exception of Fraud which has increased 2.5% since 2007 (see Table 3).

Table 3: Four Year Trend for Property Crime Rate per 1,000 Population

	Crime Rate				% Change			
	2007	2008	2009	2010	2007-2008	2008-2009	2009-2010	2007-2010
Property Crime	72.83	67.09	60.22	55.38	-7.9%	-10.2%	-8.0%	-24.0%
B&E - Total	12.55	11.07	8.76	7.78	-11.8%	-20.9%	-11.2%	-38.0%
Business	4.11	3.71	3.03	2.62	-9.6%	-18.4%	-13.7%	-36.3%
Residence	7.16	6.02	4.57	4.19	-15.9%	-24.1%	-8.4%	-41.6%
Other	1.28	1.34	1.16	0.98	3.9%	-13.0%	-15.8%	-23.9%
Theft of MV	6.45	4.82	3.89	3.24	-25.2%	-19.4%	-16.7%	-49.8%
Theft <>\$5K	39.03	36.58	34.57	31.36	-6.3%	-5.5%	-9.3%	-19.7%
Have Stolen Goods	2.22	1.85	1.89	1.52	-16.8%	2.3%	-19.7%	-31.7%
Fraud	3.89	3.25	3.55	3.99	-16.4%	9.0%	12.5%	2.5%
Arson	0.39	0.44	0.33	0.31	11.4%	-23.4%	-7.2%	-20.8%
Mischief <>\$5K	8.29	9.08	7.23	7.19	9.5%	-20.3%	-0.6%	-13.3%

The property crime rate has experienced eight consecutive annual decreases. Figure 1 shows the crime rate declined from 101.79 crimes per 1,000 population in 2002 to a low of 55.38 property crimes per 1,000 population in 2010. The dashed line represents the property crime reduction goal set in the 2008-2012 Strategic Plan.

Figure 1: Annual Property Crime Rate per 1,000 Population

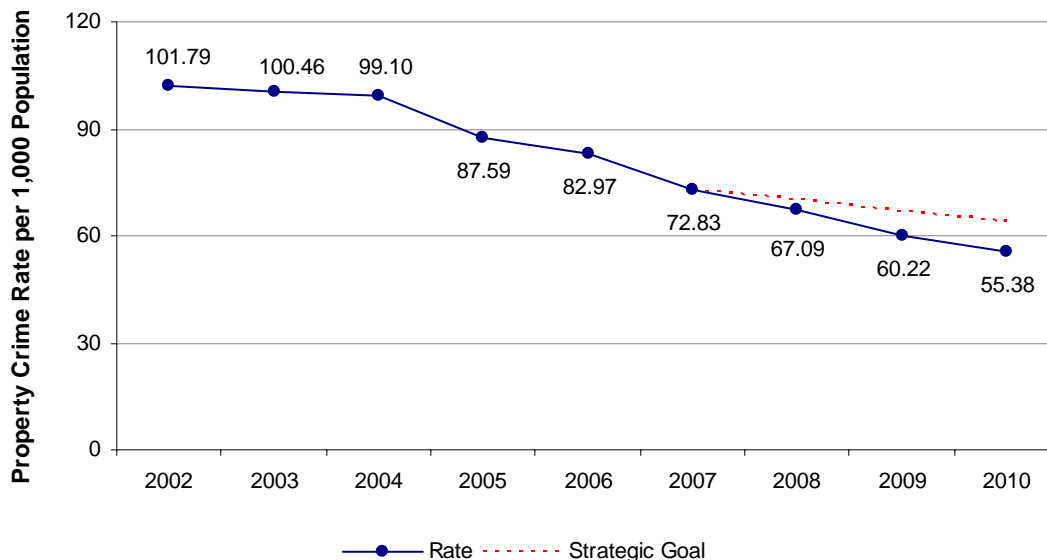




Table 4 shows property crime clearance rates “Cleared by Charge” have slightly decreased from 10.6% to 10.2% when compared to last year and showed no change when compared to last quarter.

Table 4: Property Crime Clearance Rates

Clearance Type	Current (Q4 2010)	Last Year (Q4 2009)	Last Quarter (Q3 2010)
Unfounded	2.0%	2.1%	1.7%
Founded Not Cleared	82.1%	81.9%	82.8%
Charged	10.2%	10.6%	10.6%
Cleared by Other Means	5.7%	5.4%	5.0%



VIOLENT CRIME & CLEARANCE RATES

Table 5 shows the breakdown of violent crime by District during the fourth quarter of 2009 and 2010. Overall, violent crime is down city-wide.

Table 5: City-wide & District Annual Violent Crime Comparisons

	Q4 2010	Annual Comparison	Q4 2009
District 1	419	-15.7%	497
District 2	709	7.6%	659
District 3	359	-9.1%	395
District 4	236	-6.7%	253
City-wide	1,726	-4.3%	1,804

To account for seasonal changes, Table 6 shows the percentage change from this quarter to the same quarter in the previous year as they relate to the number of reported violent crimes.

Table 6: Recent Violent Crime Trends

Quarter	# of Violent Crimes	% Change From Same Quarter Previous Year
Q4 2009	1,804	-3.7%
Q1 2010	1,829	2.8%
Q2 2010	1,777	-5.8%
Q3 2010	1,780	-11.2%
Q4 2010	1,726	-4.3%



Examining a four year trend for violent crime shows this crime category has decreased 8.7% since the establishment of the 2008 – 2012 Strategic Plan. Sexual Offence is the only crime against person that increased (11.9%) (see Table 7).

Table 7: Four Year Trend for Violent Crime Rate per 1,000 Population

	Crime Rate				% Change			
	2007	2008	2009	2010	2007-2008	2008-2009	2009-2010	2007-2010
Violent Crime	12.52	12.45	11.93	11.43	-0.6%	-4.2%	-4.2%	-8.7%
Culpable Homicide	0.03	0.03	0.03	0.01	-6.2%	-7.4%	-53.7%	-59.8%
Attempted Murder	0.03	0.04	0.03	0.02	28.1%	-19.8%	-45.3%	-43.8%
Sexual Offences	0.86	0.81	0.90	0.97	-5.7%	10.8%	7.1%	11.9%
Assaults	9.07	9.07	8.84	8.74	0.0%	-2.5%	-1.2%	-3.7%
Robbery	2.53	2.50	2.13	1.69	-1.1%	-15.0%	-20.3%	-33.0%

Figure 2 shows the annual violent crime rate has declined four consecutive years from 13.46 crimes per 1,000 population in 2006 to 11.43 crimes per 1,000 population in 2010. The dashed line represents the violent crime reduction goal set in the 2008-2012 Strategic Plan.

Figure 2: Annual Violent Crime Rate per 1,000 Population

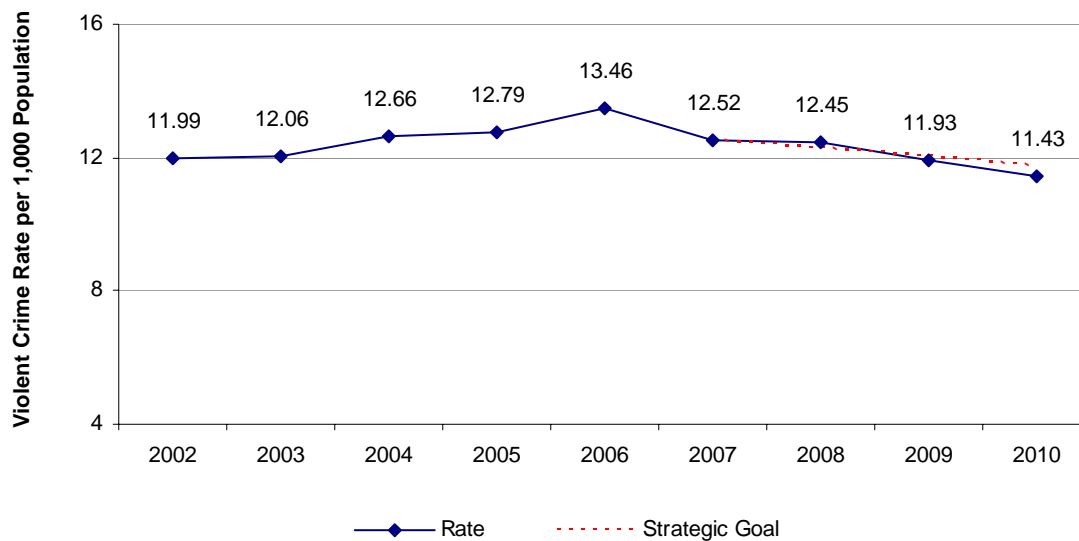




Table 8 shows violent crime “Cleared by Charge” clearance rates decreased slightly from 35.5% to 35.1% when compared to the same quarter last year and decreased from 36.3% when compared to last quarter.

Table 8: Violent Crime Clearance Rates






Clearance Type	Current (Q4 2010)	Last Year (Q4 2009)	Last Quarter (Q3 2010)
Unfounded	6.7%	7.2%	6.3%
Founded Not Cleared	46.9%	46.9%	48.3%
Charged	35.1%	35.5%	36.3%
Cleared by Other Means	11.3%	10.5%	9.1%



RESPONSE TIMES

Table 9 shows Priority 1 (P1) response times by District and shows the percentage change from this quarter to the same quarter last year.

Table 9: City-wide & District Annual Response Time Comparisons

	Q4 2010	Annual Comparison	Q4 2009
District 1	07:31	 -6.1%	08:01
District 2	09:03	 -14.7%	10:36
District 3	10:58	 -4.9%	11:32
District 4	11:43	 -2.3%	12:00
City-wide	09:39	 -8.6%	10:34

To account for seasonal changes, Table 10 shows the percentage change from this quarter to the same quarter last year as they relate to P1 response times.

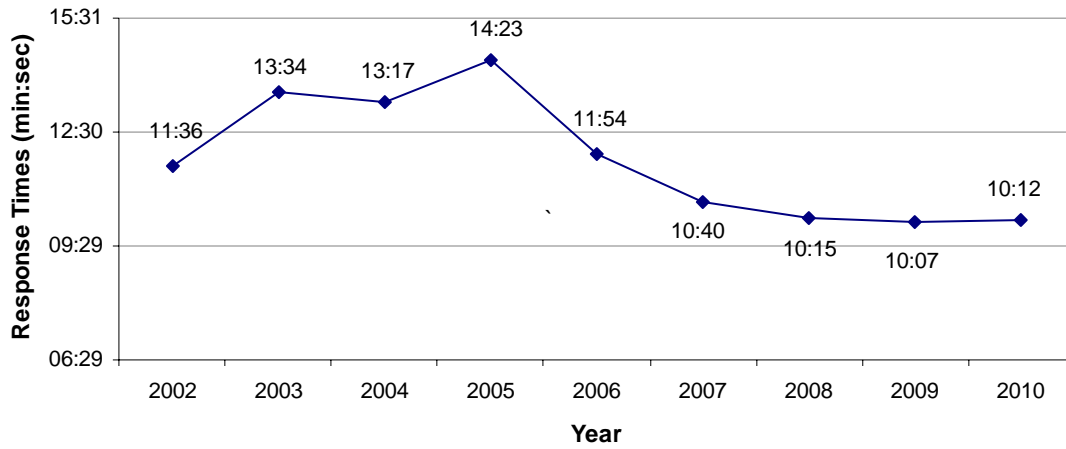
Table 10: Recent Priority 1 Response Times

Quarter	Response Time	% Change From Same Quarter Previous Year
Q4 2009	10:34	4.6%
Q1 2010	10:39	5.9%
Q2 2010	10:20	5.5%
Q3 2010	10:11	1.3%
Q4 2010	09:39	-8.6%



Figure 3 shows Priority 1 response times by year. For the first time since 2005, response times have increased.

Figure 3: Priority 1 Response Times





TRAFFIC RELATED INJURIES & DEATHS

Traffic incidents are collected under the categories of Motor Vehicle Accidents (MVAs) resulting in injuries or death. Table 11 shows the percentage change of traffic injuries from this quarter to the same quarter in the previous year.

Table 11: Traffic Incidents Involving Injured Persons

Quarter	# of Incidents	% Change From Same Quarter Previous Year
Q4 2009	350	10.4%
Q1 2010	342	26.7%
Q2 2010	270	-11.2%
Q3 2010	296	-14.7%
Q4 2010	322	-8.0%

Since 2005, the number of MVAs resulting in injuries significantly dropped from 1,998 incidents to 1,179 in 2008. Figure 4 shows that in 2009, there were 1,267 MVAs resulting in injuries that were attended by the VPD. This is a 4.2% increase in injuries from 2008.

Figure 4: Motor Vehicle Accidents with Injuries

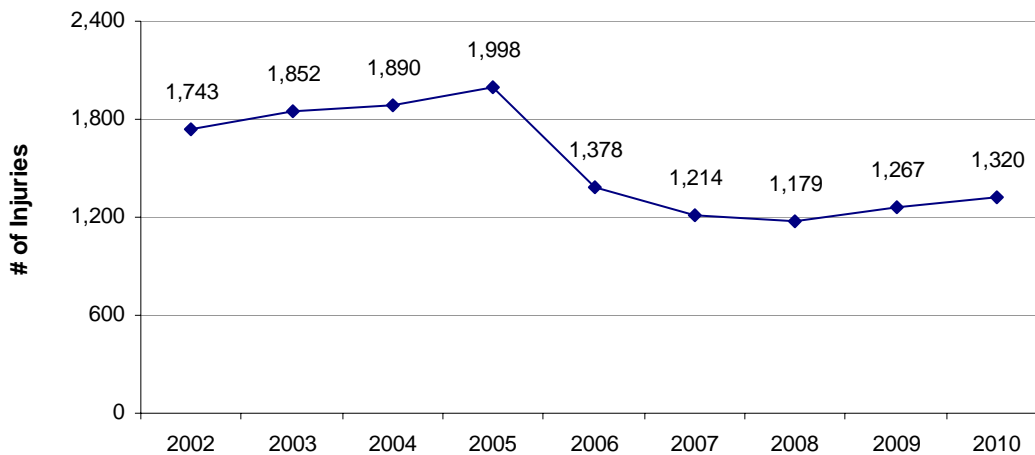




Table 12 compares the number of fatal traffic incidents and deaths seasonally as well as by quarter².

Table 12: Fatal Traffic Incidents

Quarter	# of Incidents	# of Deaths	Quarter	# of Incidents	# of Deaths
Q4 2009	4	4	Q4 2008	4	4
Q1 2010	3	3	Q1 2009	5	6
Q2 2010	2	2	Q2 2009	3	3
Q3 2010	2	2	Q3 2009	3	3
Q4 2010	2	2	Q4 2009	4	4

² Percent changes were not included in the tables as the overall small number of total fatalities cause any change to result in percentage changes that appear significant but should not be interpreted as such.



APPENDIX

Data

The data for this report is obtained from the PRIME records management system. Crime statistics at the VPD are published using the 'all offences method', which captures all of the offences associated with an incident. An incident may include up to four separate offences.

The crime statistics noted in this report reflect the raw reported crime counts based on the all offence method (where one incident can represent more than one crime) as well as cases cleared as unfounded to more accurately represent workload by members.

Crime rates are calculated per 1,000 population. BC Statistics cites Vancouver's 2009 population to be 628,621³. The population for 2010 has been projected as 638,545 using a 5-year average percentage population growth in Vancouver.

Property crime includes the following offences:

- Break and Enter
- Thefts over/under \$5000
- Theft of Motor Vehicle
- Theft from Motor Vehicle
- Have Stolen Goods
- Fraud
- Mischief

Violent crime includes the following offences:

- Culpable Homicide
- Attempted Murder
- Sex Offence⁴
- Assault
- Robbery

Clearance Rates describe the status of an incident. An incident can be cleared either as founded or unfounded.

³ BC Stats as of October 5, 2010.

⁴ On September 9th, 2008, Versadex was updated to reflect the changes brought about by Statistics Canada. Sex Offence crimes now include Luring a Child via Computer as well as Voyeurism.



Founded

- *Cleared by Charge:* A charge has been laid or is recommended to be laid against a suspect in connection with the incident.
- *Cleared by Other Means:* A suspect has been identified in connection with the incident but is processed by another means.
- *Founded but not Cleared:* A suspect has not been identified in connection with the incident.

Unfounded

- *Unfounded:* No violation of the law took place.

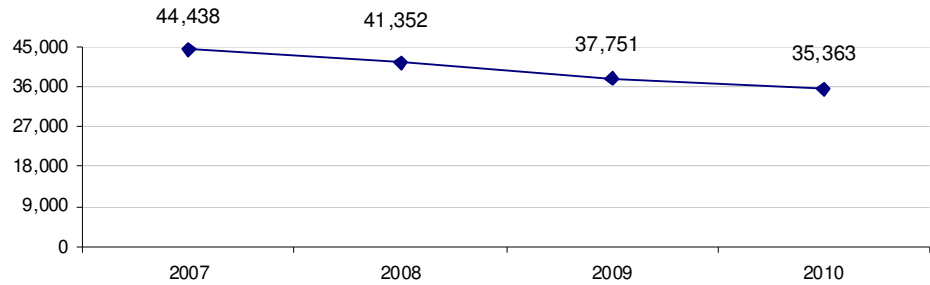
Response times are calculated by subtracting the time a unit arrives on scene at a call from when a call for service is received by E-Comm. The following calls are excluded from response time calculations: on-view calls, self initiated calls, calls with a response time less than one minute and greater than 10 hours, and call types motor vehicle incident with injury and missing persons.



TOTAL NUMBER OF INCIDENTS

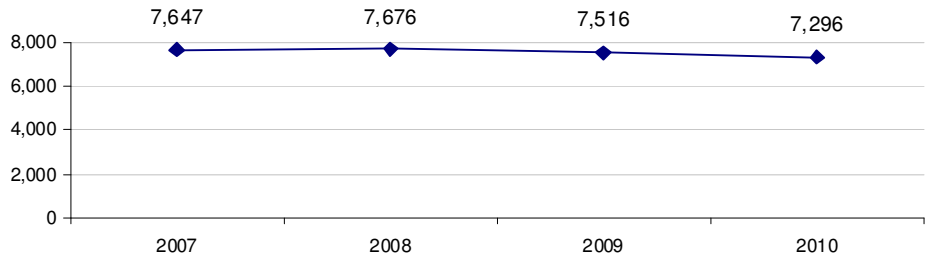
PROPERTY CRIME

2007-2010



VIOLENT CRIME

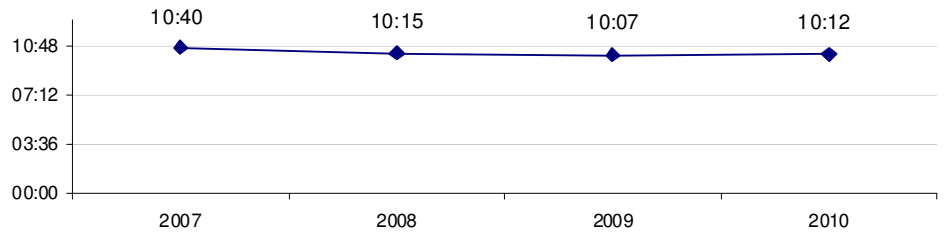
2007-2010



RESPONSE TIMES

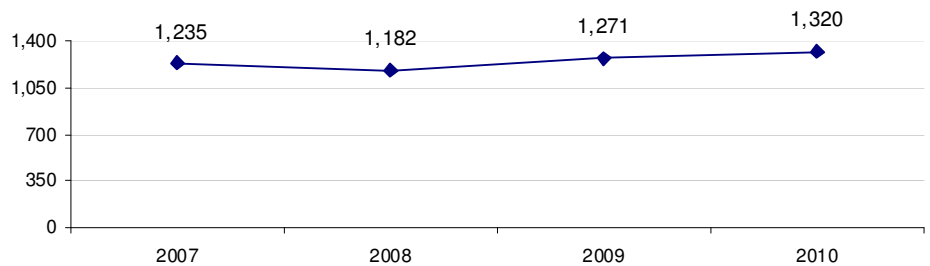
Minutes:Seconds

2007-2010



TRAFFIC INJURIES

2007-2010



TRAFFIC DEATHS

2007-2010

