



ARCHIVED - Archiving Content

Archived Content

Information identified as archived is provided for reference, research or recordkeeping purposes. It is not subject to the Government of Canada Web Standards and has not been altered or updated since it was archived. Please contact us to request a format other than those available.

ARCHIVÉE - Contenu archivé

Contenu archivé

L'information dont il est indiqué qu'elle est archivée est fournie à des fins de référence, de recherche ou de tenue de documents. Elle n'est pas assujettie aux normes Web du gouvernement du Canada et elle n'a pas été modifiée ou mise à jour depuis son archivage. Pour obtenir cette information dans un autre format, veuillez communiquer avec nous.

This document is archival in nature and is intended for those who wish to consult archival documents made available from the collection of Public Safety Canada.

Some of these documents are available in only one official language. Translation, to be provided by Public Safety Canada, is available upon request.

Le présent document a une valeur archivistique et fait partie des documents d'archives rendus disponibles par Sécurité publique Canada à ceux qui souhaitent consulter ces documents issus de sa collection.

Certains de ces documents ne sont disponibles que dans une langue officielle. Sécurité publique Canada fournira une traduction sur demande.



KEY PERFORMANCE INDICATORS - Q1 2011

PROPERTY CRIME	Q1 2011	Q1 2010	% Change
DISTRICT 1	2,125	2,710	-21.6%
DISTRICT 2	1,690	1,586	6.6%
DISTRICT 3	1,931	1,991	-3.0%
DISTRICT 4	2,173	2,253	-3.6%
CITY-WIDE*	7,929	8,542	-7.2%



-7.2%

PROPERTY CLEARANCE TYPE	Q1 2011	Q1 2010	% Change
UNFOUNDED	1.6%	2.3%	-27.7%
FOUNDED NOT CLEARED	76.8%	79.4%	-3.3%
CHARGED	11.2%	12.0%	-6.8%
CLEARED BY OTHER MEANS	5.7%	5.8%	-2.3%

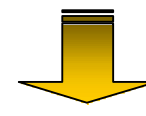
VIOLENT CRIME	Q1 2011	Q1 2010	% Change
DISTRICT 1	403	445	-9.4%
DISTRICT 2	705	679	3.8%
DISTRICT 3	329	394	-16.5%
DISTRICT 4	201	214	-6.1%
CITY-WIDE*	1,640	1,732	-5.3%



-5.3%

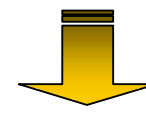
VIOLENT CLEARANCE TYPE	Q1 2011	Q1 2010	% Change
UNFOUNDED	6.0%	8.8%	-32.1%
FOUNDED NOT CLEARED	42.7%	45.7%	-6.5%
CHARGED	34.1%	40.9%	-16.5%
CLEARED BY OTHER MEANS	10.1%	10.6%	-4.1%

RESPONSE TIMES	Q1 2011	Q1 2010	% Change
DISTRICT 1	06:45	08:44	-22.7%
DISTRICT 2	08:38	09:41	-10.8%
DISTRICT 3	10:17	12:12	-15.7%
DISTRICT 4	10:21	12:27	-16.9%
CITY-WIDE*	08:56	10:39	-16.2%



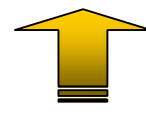
-16.2%

TRAFFIC INJURIES	Q1 2011	Q1 2010	% Change
DISTRICT 1	58	46	26.1%
DISTRICT 2	72	100	-28.0%
DISTRICT 3	103	91	13.2%
DISTRICT 4	75	112	-33.0%
CITY-WIDE*	309	349	-11.5%



-11.5%

TRAFFIC DEATHS	Q1 2011	Q1 2010	% Change
CITY-WIDE*	5	3	66.7%



66.7%

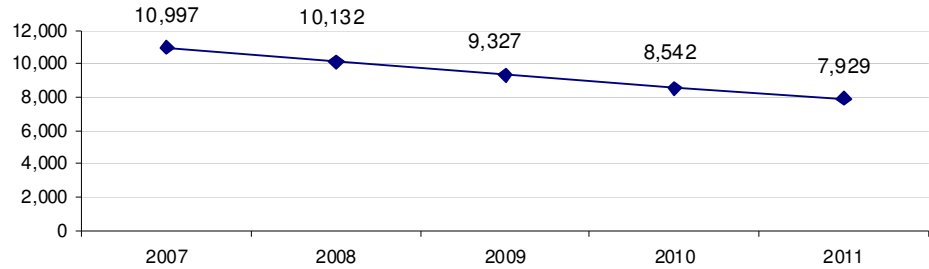
* City-wide totals include incidents coded as location unknown



TOTAL NUMBER OF INCIDENTS

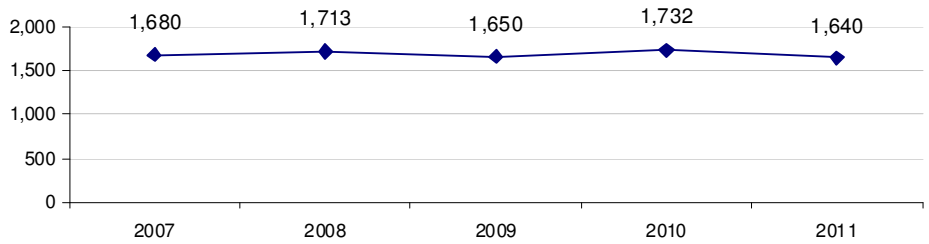
PROPERTY CRIME

1st Quarter



VIOLENT CRIME

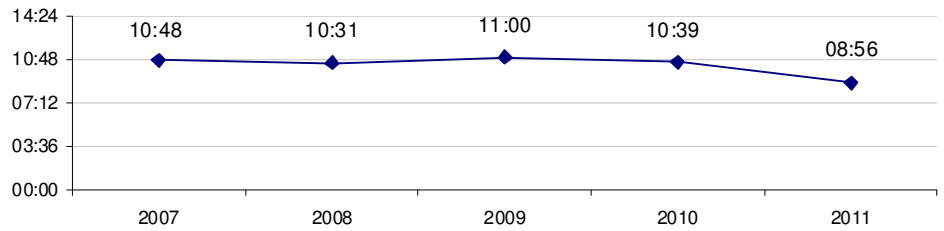
1st Quarter



RESPONSE TIMES

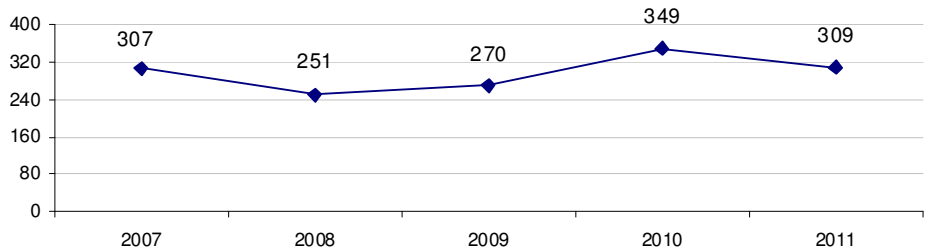
Minutes:Seconds

1st Quarter



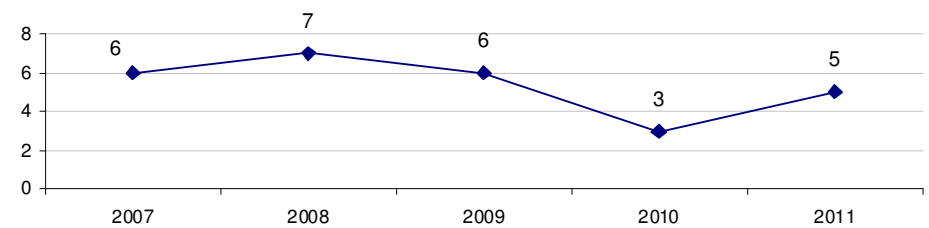
TRAFFIC INJURIES

1st Quarter



TRAFFIC DEATHS

1st Quarter





KEY PERFORMANCE INDICATORS

Q1 2011

Planning, Research & Audit Section

April 2011



TABLE OF CONTENTS

Executive Summary 3

Introduction 4

Property Crime & Clearance Rates 5

Violent Crime & Clearance Rates 8

Response Times 11

Traffic Related Injuries & Deaths 13

Appendix 15



LIST OF TABLES

Table 1: City-wide & District Annual Property Crime Comparisons.....	5
Table 2: Recent Property Crime Trends.....	5
Table 3: Four Year Trend for Property Crime Rate per 1,000 Population	6
Table 4: Property Crime Clearance Rates.....	7
Table 5: City-wide & District Annual Violent Crime Comparisons	8
Table 6: Recent Violent Crime Trends	8
Table 7: Four Year Trend for Violent Crime Rate per 1,000 Population.....	9
Table 8: Violent Crime Clearance Rates	10
Table 9: City-wide & District Annual Response Time Comparisons.....	11
Table 10: Recent Priority 1 Response Times	11
Table 11: Fatal Traffic Incidents	14

LIST OF FIGURES

Figure 1: Annual Property Crime Rate per 1,000 Population.....	6
Figure 2: Annual Violent Crime Rate per 1,000 Population.....	9
Figure 3: Priority 1 Response Times	12
Figure 4: Motor Vehicle Accidents with Injuries	13
Figure 5: Fatalities Resulting from Motor Vehicle Incidents	14



EXECUTIVE SUMMARY

Property Crime

The first quarter of 2011 showed a 7.2% decrease in property crime (7,929 offences) when compared to the same quarter last year (8,542 offences).

Violent Crime

Violent crime decreased from 1,732 offences in the first quarter of 2010 to 1,640 offences in the first quarter of 2011, a decrease in violent crime of 5.3%.

Clearance Rates

Property crime "Cleared by Charge" rates have slightly decreased from 12.0% to 11.2% when compared to the same quarter last year. However, there was a 1.6% increase in incidents "Cleared by Charge" this quarter than when compared to last quarter.

"Cleared by Charge" violent crime clearance rates decreased from 40.9% to 34.1% when compared to the same quarter last year and increased from 33.5% when compared to last quarter.

Response Times

Priority 1 response times in the first quarter of 2011 (8:56) are faster by 16.2% when compared to the same quarter last year (10:39).

Traffic Attended Injuries & Deaths

The VPD attended 40 less traffic injury calls in the first quarter of 2011 (309) than when compared to the same quarter last year (349). This represents an 11.5% decrease in traffic injury attended calls (note: the VPD is in the process of obtaining data, on a quarterly basis, on collisions reported to ICBC that occurred in Vancouver).

There were 5 traffic fatalities that occurred in the first quarter of 2011 and 3 fatalities in the first quarter of 2010.

Annual Citizen Satisfaction Levels

Citizen satisfaction survey results are reported annually. The 2010 results will be reported in the Q2 2011 KPI Report.

Budget Variance

Budget variance data for the quarter is presented to the Vancouver Police Board through their Finance Committee.



INTRODUCTION

The Vancouver Police Department's (VPD) 2008-2012 Strategic Plan establishes the VPD's vision of being "Canada's leader in policing – providing safety for all". The Strategic Plan identifies policing priorities that include the following seven operational goals:

- To reduce property crime by 20% by 2012;
- To reduce violent crime by 10% by 2012;
- To suppress violent gang activity;
- To reduce traffic-related injuries and deaths;
- To improve liveability by reducing street disorder;
- To implement best practices for consequence management and emergency preparedness; and,
- To enhance proactive and visible policing.

The establishment of organizational goals is critical, and success can be accurately determined through effective measurement. The VPD and Vancouver Police Board identified Key Performance Indicators (KPIs) that provide a macro-level perspective of organizational performance. A KPI report is produced on a quarterly basis to provide a snapshot of the VPD relative to its primary purpose – public safety.

This KPI Report presents data for the first quarter of 2011 (Q1 2011). This quarter is compared to the same quarter the previous year (Q1 2010). A description of the data included in this report and the extraction criteria is available in the appendix. The KPIs that will be presented in this report are:

- Property crime rates
- Violent crime rates
- Clearance rates for criminal investigations
- Traffic related injuries and deaths
- Annual citizen satisfaction survey¹

¹ This KPI will be reported annually in the second quarter of each year.



PROPERTY CRIME & CLEARANCE RATES

Table 1 shows the breakdown of property crime by District during the first quarter of 2010 and 2011. As shown, property crime has decreased 7.2% city-wide when comparing this quarter to the same quarter last year.

Table 1: City-wide & District Annual Property Crime Comparisons

	Q1 2011	Annual Comparison	Q1 2010
District 1	2,125	-21.6%	2,710
District 2	1,690	6.6%	1,586
District 3	1,931	-3.0%	1,991
District 4	2,173	-3.6%	2,253
City-wide	7,929	-7.2%	8,542

To account for seasonal changes, Table 2 shows the percentage change from this quarter to the same quarter in the previous year as they relate to the number of reported property crimes.

Table 2: Recent Property Crime Trends

Quarter	# of Property Crimes	% Change From Same Quarter Previous Year
Q1 2010	8,542	-8.4%
Q2 2010	8,638	-6.2%
Q3 2010	9,235	-5.4%
Q4 2010	8,294	-3.6%
Q1 2011	7,929	-7.2%



Table 3 shows property crime has decreased annually since the implementation of the 2008 – 2012 Strategic Plan. This decrease is attributed to all areas of property crime with the exception of Fraud which has increased 2.0% since 2007 (see Table 3).

Table 3: Four Year Trend for Property Crime Rate per 1,000 Population

	Crime Rate				% Change			
	2007	2008	2009	2010	2007-2008	2008-2009	2009-2010	2007-2010
Property Crime	71.33	65.78	58.85	53.97	-7.8%	-10.5%	-8.3%	-24.3%
B&E - Total	12.35	10.87	8.65	7.69	-12.0%	-20.4%	-11.1%	-37.7%
Business	4.05	3.66	3.01	2.60	-9.6%	-17.7%	-13.8%	-35.9%
Residence	7.04	5.90	4.49	4.13	-16.2%	-23.8%	-8.0%	-41.3%
Other	1.27	1.31	1.15	0.97	3.5%	-12.3%	-16.1%	-23.9%
Theft of MV	5.54	4.04	3.05	2.38	-27.1%	-24.4%	-22.1%	-57.1%
Theft from MV (<>\$5K)	20.46	18.71	16.18	13.54	-8.5%	-13.5%	-16.3%	-33.8%
Theft (<> \$5K)	18.30	17.68	18.02	17.46	-3.4%	1.9%	-3.1%	-4.6%
Have Stolen Goods	2.21	1.84	1.88	1.52	-16.6%	2.1%	-19.3%	-31.3%
Fraud	3.86	3.21	3.52	3.94	-16.7%	9.4%	11.9%	2.0%
Arson	0.40	0.43	0.33	0.30	9.7%	-24.8%	-6.5%	-22.8%
Mischief (<> \$5K)	8.22	9.00	7.22	7.14	9.5%	-19.7%	-1.2%	-13.2%

The property crime rate has experienced eight consecutive annual decreases. Figure 1 shows the crime rate declined from 100.42 crimes per 1,000 population in 2002 to a low of 53.97 property crimes per 1,000 population in 2010. The dashed line represents the property crime reduction goal set in the 2008-2012 Strategic Plan.

Figure 1: Annual Property Crime Rate per 1,000 Population

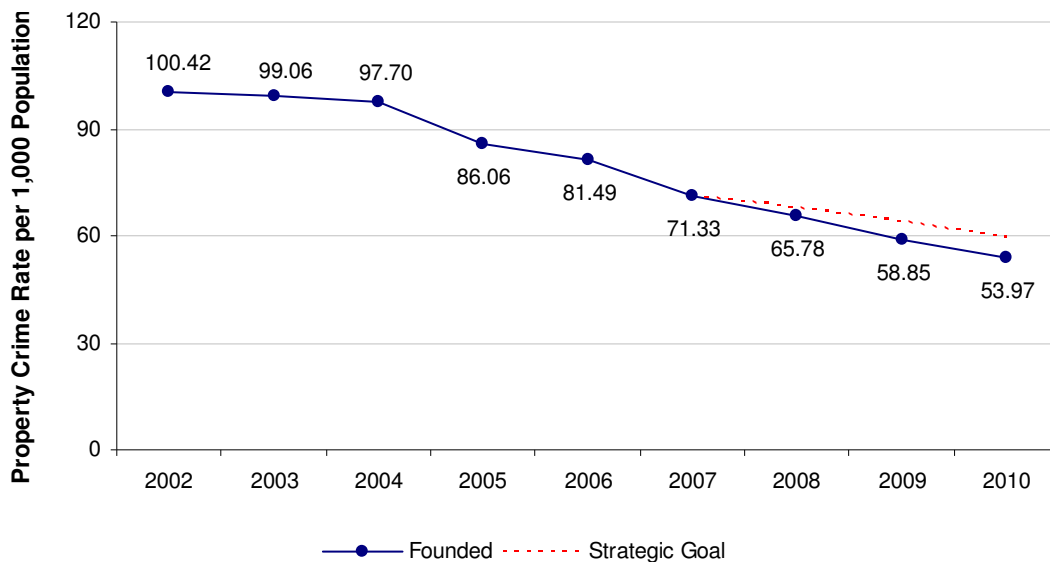




Table 4 shows property crime “Cleared by Charge” rates have slightly decreased from 12.0% to 11.2% when compared to the same quarter last year. However, there was a 1.6% increase in incidents “Cleared by Charge” this quarter than when compared to last quarter.

Table 4: Property Crime Clearance Rates

Clearance Type	Current (Q1 2011)	Last Year (Q1 2010)	Last Quarter (Q4 2010)
Unfounded	1.6%	2.3%	1.8%
Founded Not Cleared	76.8%	79.4%	73.1%
Charged	11.2%	12.0%	9.6%
Cleared by Other Means	5.7%	5.8%	5.4%



VIOLENT CRIME & CLEARANCE RATES

Table 5 shows the breakdown of violent crime by District during the first quarter of 2010 and 2011. Overall, violent crime is down city-wide.

Table 5: City-wide & District Annual Violent Crime Comparisons

	Q1 2011	Annual Comparison	Q1 2010
District 1	403	-9.4%	445
District 2	705	3.8%	679
District 3	329	-16.5%	394
District 4	201	-6.1%	214
City-wide	1,640	-5.3%	1,732

To account for seasonal changes, Table 6 shows the percentage change from this quarter to the same quarter in the previous year as they relate to the number of reported violent crimes.

Table 6: Recent Violent Crime Trends

Quarter	# of Violent Crimes	% Change From Same Quarter Previous Year
Q1 2010	1,732	5.0%
Q2 2010	1,661	-5.4%
Q3 2010	1,710	-7.7%
Q4 2010	1,610	-4.1%
Q1 2011	1,640	-5.3%



Examining a four year trend for violent crime shows this crime category has decreased 10.5% since the establishment of the 2008 – 2012 Strategic Plan. Sexual Offence is the only crime against person that increased (16.5%) (see Table 7).

Table 7: Four Year Trend for Violent Crime Rate per 1,000 Population

	Crime Rate				% Change			
	2007	2008	2009	2010	2007-2008	2008-2009	2009-2010	2007-2010
Violent Crime	11.66	11.49	11.07	10.44	-1.5%	-3.7%	-5.7%	-10.5%
Culpable Homicide	0.03	0.03	0.03	0.01	-6.2%	-2.0%	-51.1%	-55.1%
Attempted Murder	0.03	0.03	0.03	0.02	22.3%	-16.0%	-45.7%	-44.2%
Sexual Offences	0.75	0.73	0.81	0.87	-2.3%	11.2%	7.2%	16.5%
Assaults	8.36	8.20	8.12	7.87	-1.9%	-1.1%	-3.1%	-5.9%
Robbery	2.50	2.49	2.08	1.67	-0.2%	-16.5%	-19.7%	-33.1%

Figure 2 shows the annual violent crime rate has declined four consecutive years from 12.13 crimes per 1,000 population in 2006 to 10.44 crimes per 1,000 population in 2010. The dashed line represents the violent crime reduction goal set in the 2008-2012 Strategic Plan.

Figure 2: Annual Violent Crime Rate per 1,000 Population

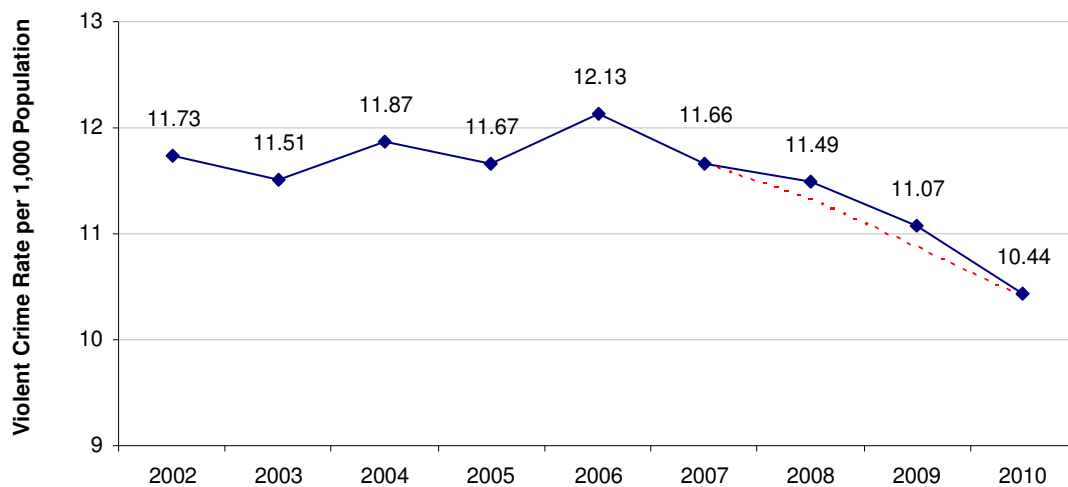




Table 8 shows “Cleared by Charge” violent crime clearance rates decreased slightly from 40.9% to 34.1% when compared to the same quarter last year and increased from 33.5% when compared to last quarter.

Table 8: Violent Crime Clearance Rates






Clearance Type	Current (Q1 2011)	Last Year (Q1 2010)	Last Quarter (Q4 2010)
Unfounded	6.0%	8.8%	6.4%
Founded Not Cleared	42.7%	45.7%	44.9%
Charged	34.1%	40.9%	33.5%
Cleared by Other Means	10.1%	10.6%	10.8%



RESPONSE TIMES

Table 9 shows Priority 1 (P1) response times by District and shows the percentage change from this quarter to the same quarter last year.

Table 9: City-wide & District Annual Response Time Comparisons

	Q1 2011	Annual Comparison	Q1 2010
District 1	06:45	 -22.7%	08:44
District 2	08:38	 -10.8%	09:41
District 3	10:17	 -15.7%	12:12
District 4	10:21	 -16.9%	12:27
City-wide	08:56	 -16.2%	10:39

To account for seasonal changes, Table 10 shows the percentage change from this quarter to the same quarter last year as they relate to P1 response times.

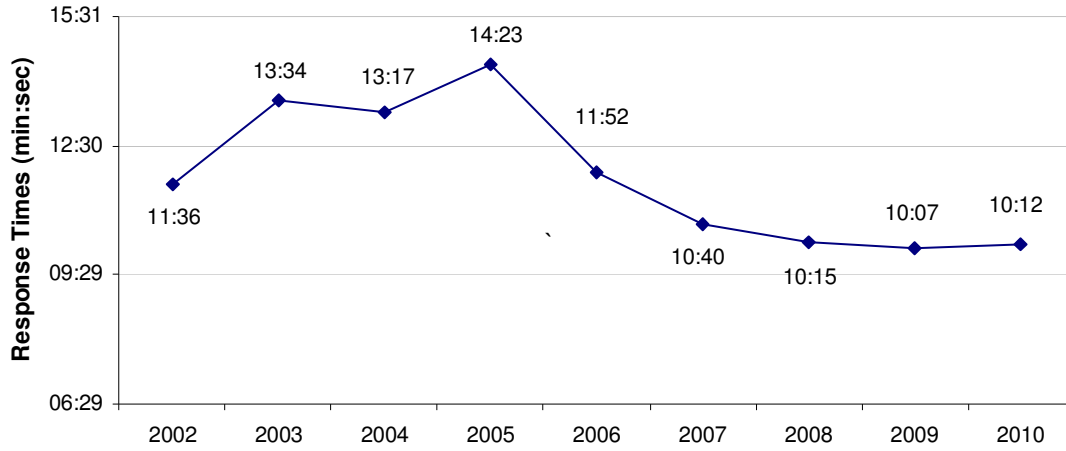
Table 10: Recent Priority 1 Response Times

Quarter	Response Time	% Change From Same Quarter Previous Year
Q1 2010	10:39	5.8%
Q2 2010	10:20	5.5%
Q3 2010	10:11	1.3%
Q4 2010	09:39	-8.6%
Q1 2011	08:56	-16.2%



Figure 3 shows Priority 1 response times by year. For the first time since 2005, response times have increased. The difference between 2009 and 2010 is an increase of 5 seconds.

Figure 3: Priority 1 Response Times



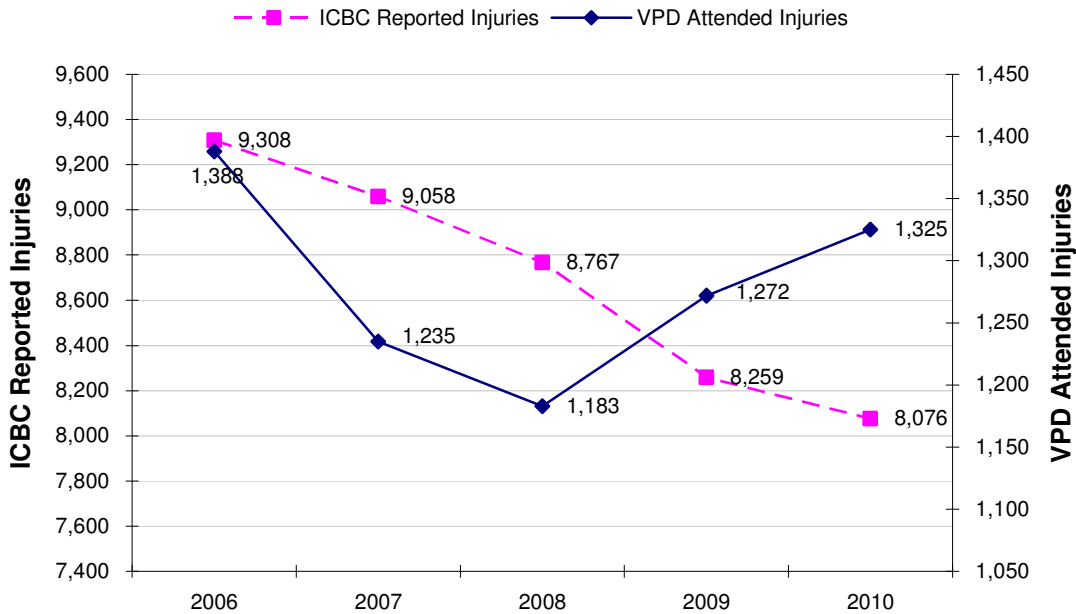


TRAFFIC RELATED INJURIES & DEATHS

ICBC² reported traffic injuries versus VPD traffic injuries attended differ substantially. Data from ICBC speaks to the safety of the roads whereas data from the VPD is more reflective of workload. For example, if calls for service are lower than usual or officers have more proactive time, then officers have more time to attend a motor vehicle accident (MVA) where there is an injury. Conversely, if calls for service are higher or proactive time is lower, then officers will not be able to attend as many MVA-with-injury incidents.

Figure 4 shows the actual number of ICBC reported injuries has decreased 13.2% since 2006, from 9,308 to 8,076 injuries. Over the same time period, the number of incidents the VPD attended injury calls decreased from 2006 to 2008, but increased from 2008 to 2010.

Figure 4: Motor Vehicle Accidents with Injuries



Please note the VPD is working with ICBC to obtain their reported MVA with-injury data on a quarterly basis. Future KPI reports will show both sets of data: VPD attended MVAs with-injury incidents and the total number of MVAs with-injury that are reported to ICBC (per quarter).

² Data received from ICBC

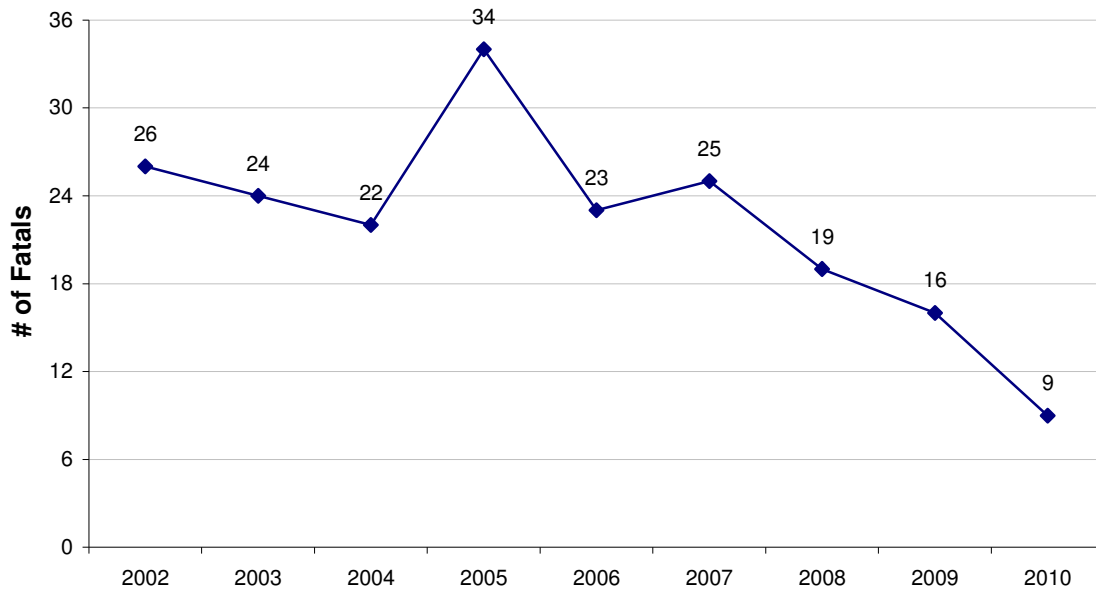


Table 11 compares the number of fatal traffic incidents and deaths seasonally as well as by quarter³.

Table 11: Fatal Traffic Incidents

Quarter	# of Incidents	# of Deaths	Quarter	# of Incidents	# of Deaths
Q1 2010	3	3	Q1 2009	5	6
Q2 2010	2	2	Q2 2009	3	3
Q3 2010	2	2	Q3 2009	3	3
Q4 2010	2	2	Q4 2009	4	4
Q1 2011	5	5	Q1 2010	3	3

Figure 5: Fatalities Resulting in Motor Vehicle Incidents



³ Percent changes were not included in the tables as the overall small number of total fatalities cause any change to result in percentage changes that appear significant but should not be interpreted as such.



APPENDIX

Data

The data for this report is obtained from the PRIME records management system. Crime statistics at the VPD are published using the 'all offences method', which captures all of the offences associated with an incident. An incident may include up to four separate offences.

The crime statistics noted in this report reflect the raw reported crime counts based on the all offence method and exclude all cases cleared as unfounded to more accurately represent actual criminal offences rather than incidents reported.

Crime rates are calculated per 1,000 population. BC Statistics cites Vancouver's 2010 population to be 642,843⁴.

Property crime includes the following offences:

- Break and Enter
- Theft of Motor Vehicle
- Thefts from Motor Vehicle over/under \$5,000
- Theft over/under \$5,000
- Have Stolen Goods
- Fraud
- Mischief

Violent crime includes the following offences:

- Culpable Homicide
- Attempted Murder
- Sex Offence⁵
- Assault
- Robbery

⁴ BC Stats as of March 30, 2011.

⁵ On September 9th, 2008, Versadex was updated to reflect the changes brought about by Statistics Canada. Sex Offence crimes now include Luring a Child via Computer as well as Voyeurism.



Clearance Rates describe the status of an incident. An incident can be cleared either as founded or unfounded.

Founded

- *Cleared by Charge:* A charge has been laid or is recommended to be laid against a suspect in connection with the incident.
- *Cleared by Other Means:* A suspect has been identified in connection with the incident but is processed by another means.
- *Founded but not Cleared:* A suspect has not been identified in connection with the incident.

Unfounded

- *Unfounded:* No violation of the law took place.

Response times are calculated by subtracting the time a unit arrives on scene at a call from when a call for service is received by E-Comm. The following calls are excluded from response time calculations: on-view calls, self initiated calls, calls with a response time less than one minute and greater than 10 hours, and call types motor vehicle incident with injury and missing persons.